



Newsletter

Greenough River Solar Farm, Australia's best performing utility-scale solar farm in February 2022

Greenough River Solar Farm Performance Shines Brightly

Greenough River Solar Farm's capacity factor of almost 38 per cent in February saw Australia's first utility-scale solar farm named the best performing in the country by independent energy research firm, Rystad Energy.

Bright Energy Investments (BEI) General Manager, Tom Froud, said the 40-megawatt solar farm's performance was an example of the ongoing benefit of renewable energy for Western Australians.

"Bright Energy Investments is leading the transition to renewables by harnessing the power of solar and wind energy," he said.

"Greenough River Solar Farm was a pioneering utility-scale project when it was completed a decade ago and following expansion it remains a sustainable energy source for Western Australians."

The result means the BEI asset improved on its second-place ranking in Rystad Energy's January analysis of the nation's top utility photovoltaic assets.



DID YOU KNOW?

Global Wind Day is Wednesday, 15 June!

Bright Energy Investments is proud to be harnessing the power of wind through more than 200MW of generating capacity at Warradarge and Albany Grasmere wind farms.



A Watts-in-a-Million Milestone for Warradarge Wind Farm

Bright Energy Investments' Warradarge Wind Farm has generated its first terawatt-hour of energy since it began operation in 2020. BEI General Manager, Tom Froud, said the milestone reflected the large-scale renewable asset's high-performance.

"Warradarge Wind Farm is proving its worth as one of the best major renewables projects in Australia," he said.

"It is exciting to know the wind farm has fed enough energy into the South West Interconnected System (SWIS) to power around a quarter of Western Australian homes with renewable energy."

The 180-megawatt wind farm reached the milestone in March and has produced enough electricity to power the average annual energy consumption of 212,000 Western Australian homes since August 2020.

About Bright Energy Investments

Bright Energy Investments (BEI) is focussed on the development of large-scale renewable energy projects in Western Australia. Established in April 2018, BEI is an investment vehicle established between WA electricity generator and retailer Synergy, global infrastructure investment fund DIF and industry superannuation giant Cbus, to develop over 250MW of renewable energy projects. The BEI portfolio currently includes the Greenough River Solar Farm in the state's Mid-West, the Albany Grasmere Wind Farm in the Great Southern Region and the 180MW Warradarge Wind Farm near Eneabba which is one of the best renewable energy projects in the country. For more information visit. www.brightenergyinvestments.com.au.



Warradarge Wind Farm Community Grants and Open Day

Bright Energy Investments is pleased to announce that applications for the 2022 Warradarge Wind Farm Community Grants program will open in July.

The grants program aims to support local events, short-term projects and equipment or fit-outs for organisations delivering community projects and services which are vital to regional Western Australian communities.

The successful applicants will receive certificates at Warradarge Wind Farm during an open day planned for later this year – keep an eye on our website and LinkedIn page for more information!



brightenergyinvestments.com.au



linkedin.com/company/bright-energy-investments

Joint Venture Responsibilities Shared as Chair Changes

Cbus Director Infrastructure, Alex Miller, has been appointed Non-Executive Chairman of Bright Energy Investments as part of rotating chair responsibilities between joint venture partners Cbus, DIF Capital Partners and Synergy.



**Cbus Director
Infrastructure, Alex Miller**

Mr Miller has represented Cbus on BEI's Board since 2020 and brings to the position over 18 years of experience spanning equity and debt financing of infrastructure, advisory, the energy sector and government.

BEI thanks Synergy General Manager Commercial, Kurt Baker, for his time as

chairperson at the conclusion of Synergy's two-year representation in the role. Mr Baker stays on the board in the position of Non-Executive Director, alongside continuing DIF Capital Partners Associate Director, Charles Fung.

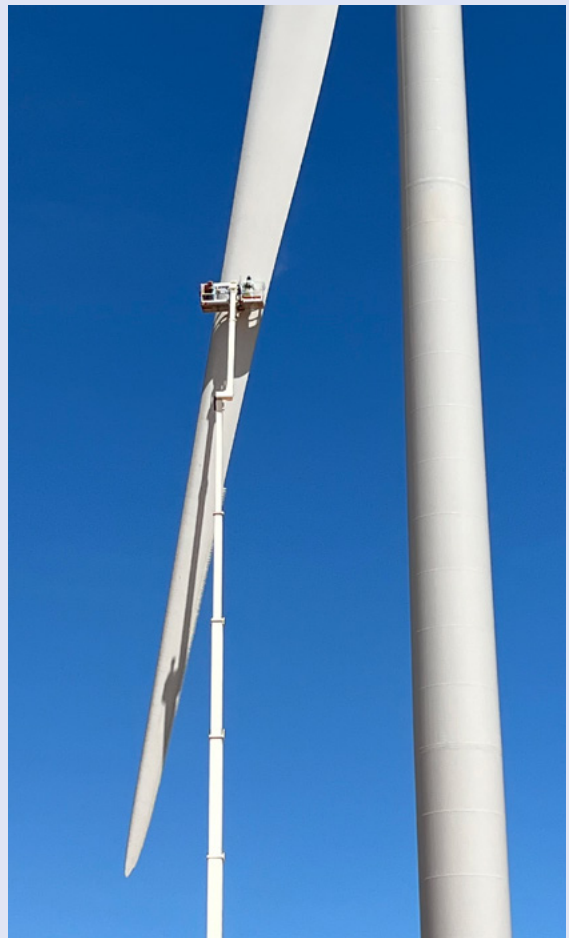
General Maintenance Update

A range of maintenance services have been undertaken across Bright Energy Investments assets over the past three months to support their ongoing performance and reliability.

Ongoing scheduled work by operations and maintenance contractors, and environmental audits have been completed at Greenough River Solar Farm and Warradarge Wind Farm during the last quarter. Further work was completed on turbine 11 at Warradarge Wind Farm to repair turbine blade delamination in May and has now resumed operation.

At Albany Grasmere Wind Farm, leading edge work on blades is currently being performed by operations and maintenance contractor Worley Power Services on turbine 2. As the site is open to the public throughout the year, BEI thanks visitors for their patience and understanding while these works are completed.

Turbine 11 blade delamination works completed in May



Contact us

For more information on BEI and its projects, please visit our website or contact us



info@brightenergyinvestments.com.au



www.brightenergyinvestments.com.au